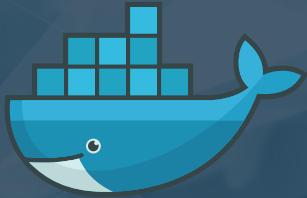


AutoPi.io



Docker Integration Solution

www.autopi.io
sales@autopi.io
+45 31 34 37 19

The most versatile
IoT-based
telematics solution
on the market



Docker Integration



Utilize Docker on the AutoPi, to run your own software in a standardized, isolated environment on each device. Become independent of network connection and maintain control over your system.

Docker Integration with AutoPi

Docker is a platform for developing and running applications. Build and maintain your applications with AutoPi Docker Integration. Easily take care of your applications with docker containers and manage them through the AutoPi solution. The solution can be customized and is built for efficient and convenient usage.

With the Docker Integration, you can deploy and manage docker containers on your AutoPi devices. It makes it easy to create, deploy and run your applications on the devices in your fleet by using containers with your own software.

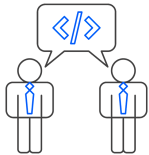
It also enabled you to utilize existing software by containerizing it. A container consists of custom software and all dependencies needed to run it, which is then bundled in one image which can be executed on a docker host, like the AutoPi device.

How Does it Work?

Advantages

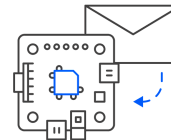
Docker allows you to deliver the software faster by separating your applications from your infrastructure. It provides you with possibility to manage your infrastructure in the ways you run your applications.

Benefits of AutoPi Docker Integration



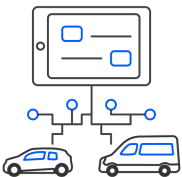
Write in your own language

Your internal IT department is capable of writing in their own language.



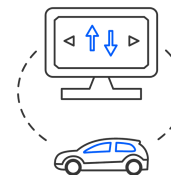
Push data to MQTT

Easily push data to container through MQTT on Raspberry Pi.



Manage your fleets

Manage deployment to your single vehicle or whole fleet.



OTA update

Possibility to send over-the-air (OTA) updates.

Contact

www.autopi.io
sales@autopi.io
+45 31 34 37 19

C.A. Olesens gade 4, 2nd floor
9000 Aalborg
Denmark
VAT: DK38816233

We look forward to hearing from you.

The AutoPi Team

The logo for AutoPi.io, featuring the text "AutoPi.io" in a white sans-serif font. The "o" in "Pi" is replaced by a blue circle with a white dot in the center, resembling an eye or a sensor. The ".io" is in a smaller font size and red color. The logo is set against a dark blue background with red and white diagonal streaks.